

■ Data sheet: MT DIN-rail socket with screw-type terminals



■ SCHRACK-INFO

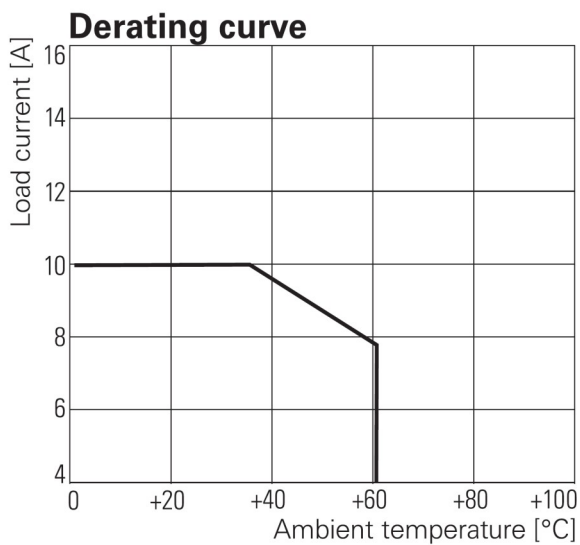
- Snap-on mounting on DIN-rail
- Screw mounting
- Pozidrive screws with rising clamp terminals
- Logical layout of input-/output connections
- White marking area

■ Technical data

Rated voltage/Max. switching voltage	240/400V AC
Rated current	10A
Dielectric strength	
Coil-contact circuit	2500V _{rms}
Open contact circuit	1500V _{rms}
Adjacent contact circuit	2500V _{rms}
Clearance / creepage coil-contact circuit	≥2,8/4mm
Material group of insulation parts	IIIa
Insulation to IEC 60664-1	
Coil-contact circuit	basic
Open contact circuit	functional
Adjacent contact circuit	basic
Rated insulation voltage	250V
Pollution degree	2
Rated voltage system	230/400 V
Overvoltage category	III

Ambient temperature range	-20...+80°C	
Terminals	Screw	
Terminals screw torque acc. IEC 61984	0,5 Nm (max. 0,7 Nm)	
Wire strip length	9 mm	
Wire cross section		
	Single wire	2 x 2,5 mm ²
	Fine wire	2 x 2,5 mm ²
	With bootlace crimp	1 x 2,5 mm ²
Insertion cycles	A (10)	
Max. Insertion Force total	100 N	
Mounting distance	≥0 mm, dense packing	
Weight		
	YMR78700	54g
	YMR78701	47g

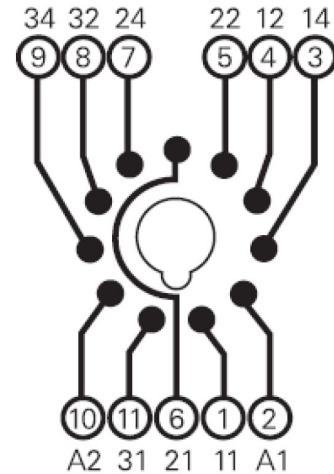
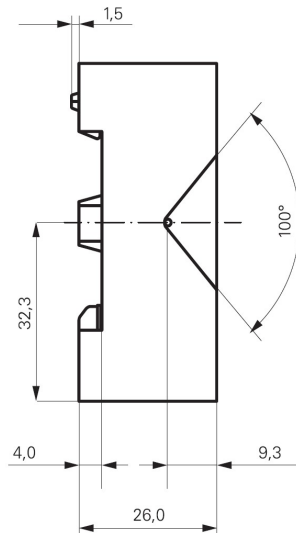
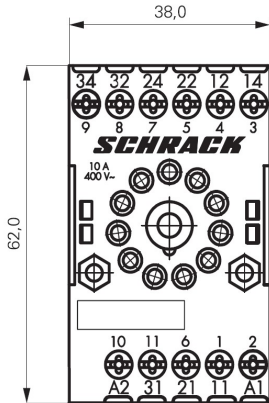
Derating curve



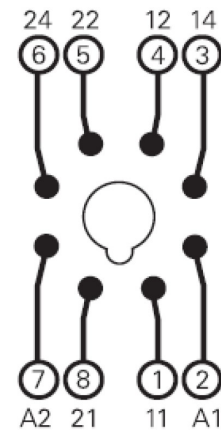
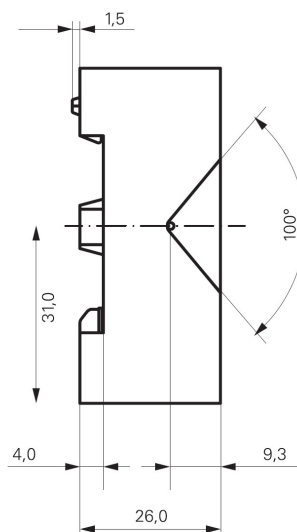
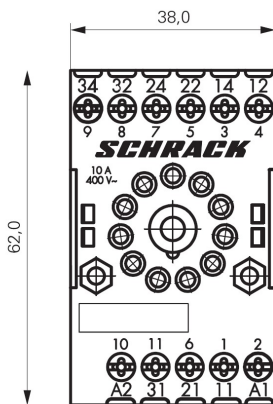
■ Measurements (mm)

■ Wiring diagram

YMR78700



YMR78701



■ Articles

DIN-rail socket with screw-type terminals

DESCRIPTION	ORDER NO.
1 1-pole socket with screw connection for 3-pole MT-relays	YMR78700--
8-pole socket with screw connection for 2-pole MT-relays	YMR78701--
Metal retaining clip	MT28800---